

Customer :

customer

Customer part :

customer part

Comment :

Comment

S1=3.28

S2=3.81

Tmax=457

Tp S2=496.0

PI=0.46

HI=114

Sample =1644.60

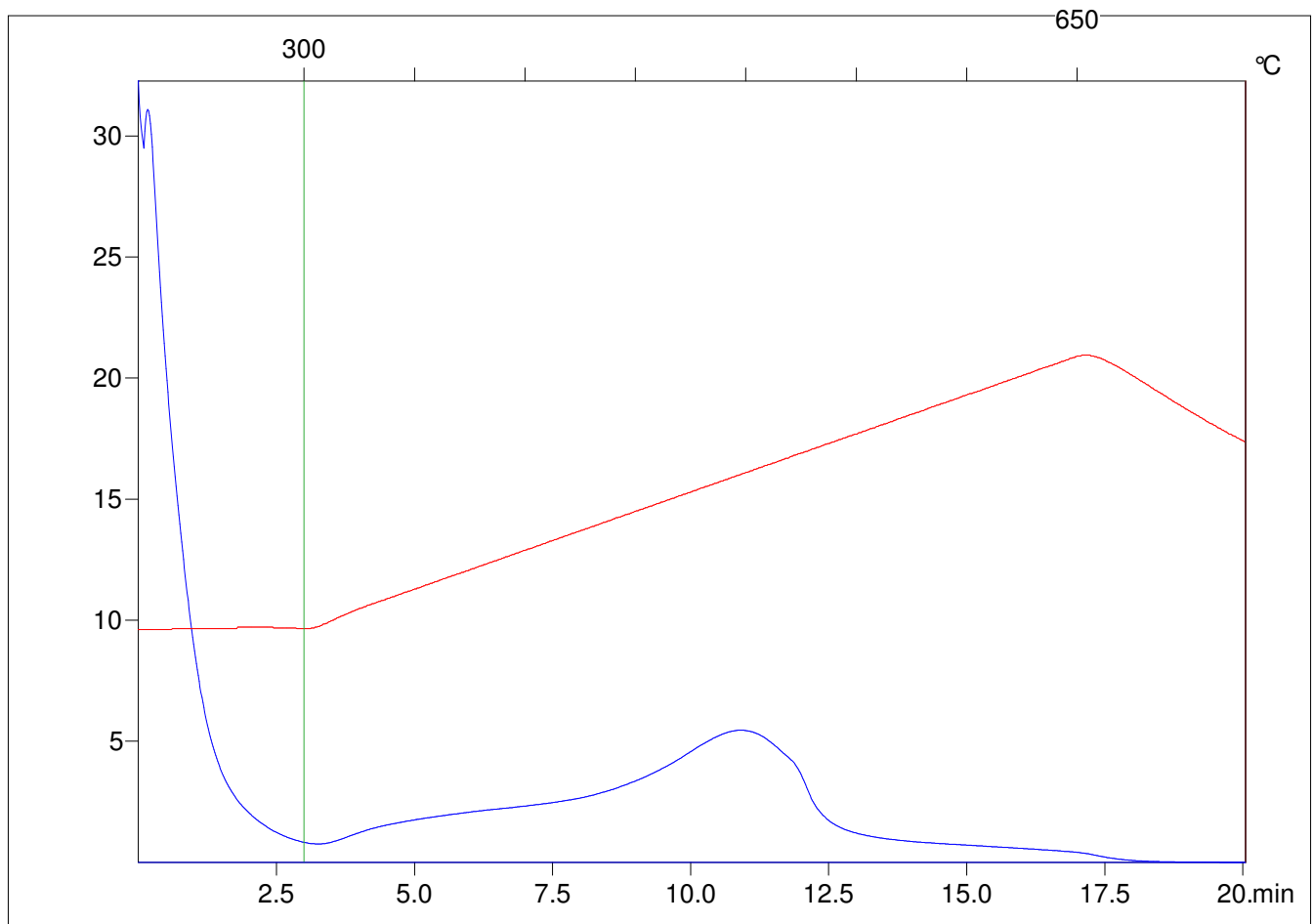
Method =Bulk Rock

Cycle=Basic

KFID(10*9)=1444

Qty =70.3

TOC=3.33



C:\VINCI\PK1792\PK052.R00 : FID pyrolysis graphic

State

Pyro Status

Oxi Status